

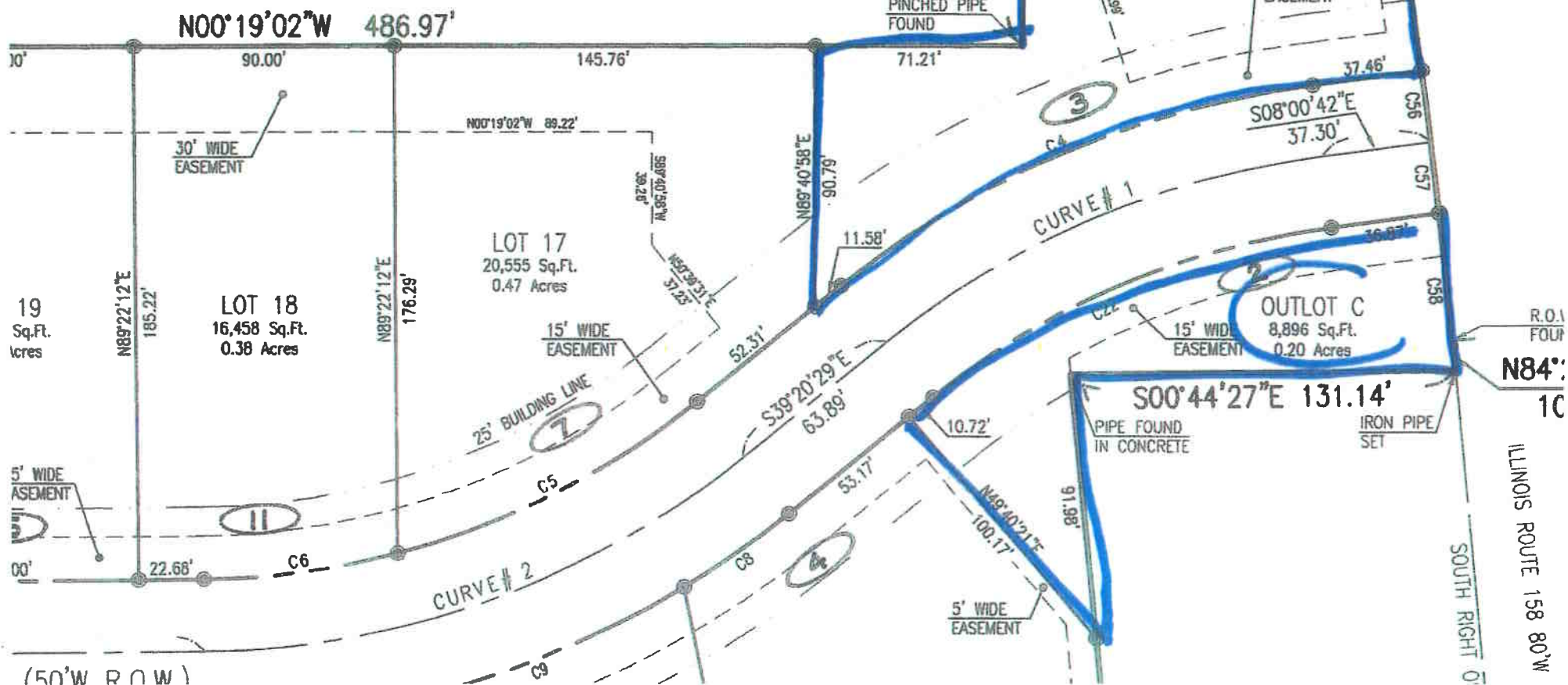
STONE BRIDGE

Plot BOOK 105 Pg. 6
A01878459

FINAL PLAT FOR ONE BRIDGE ESTATES

PART OF THE EAST HALF OF SECTION 10,
S, R9W, OF THE THIRD PRINCIPAL MERIDIAN
VILLAGE OF MILLSTADT
ST. CLAIR COUNTY, ILLINOIS

REM



$R=2252.00'$
 $L=239.34'$
 $Tan=119.78'$
 $DELTA=6'05''$
 $CB=S81'23'1$
 $CD=239.22'$

R.O.I
 FOUR
 N84°:
 10