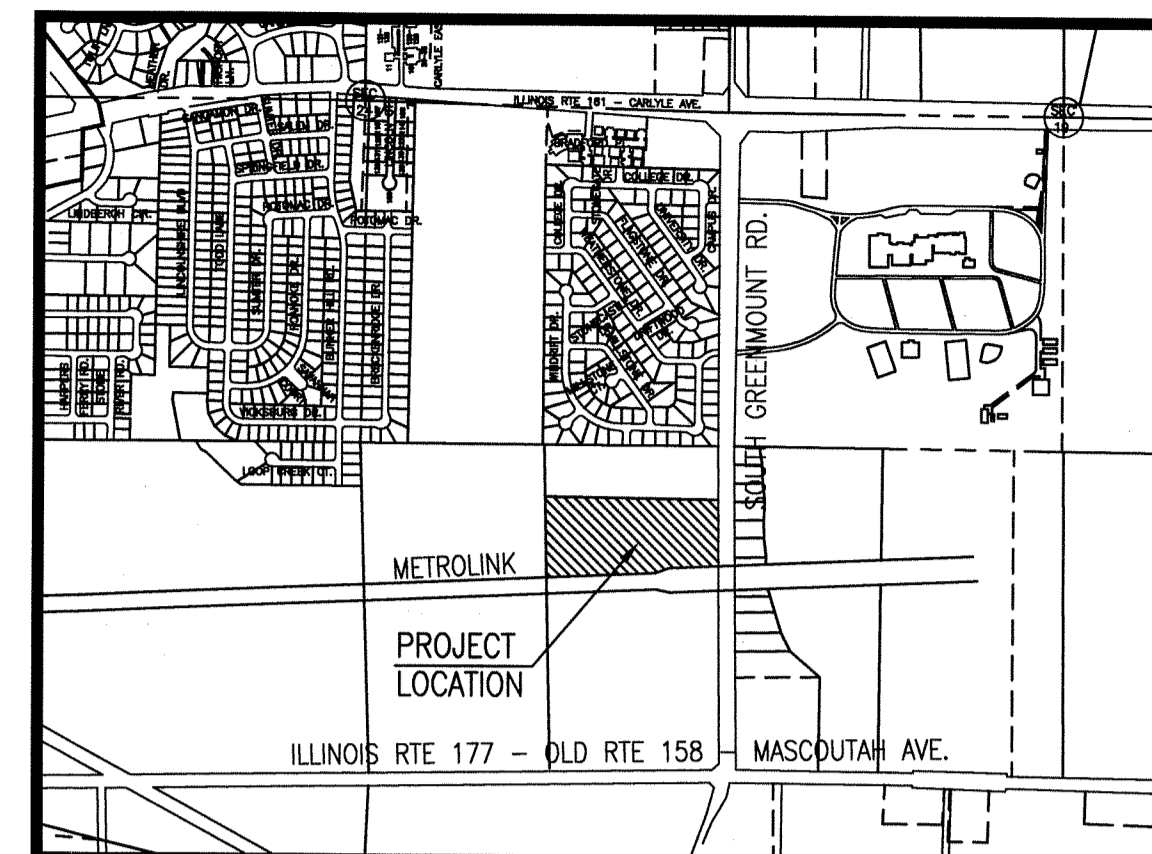
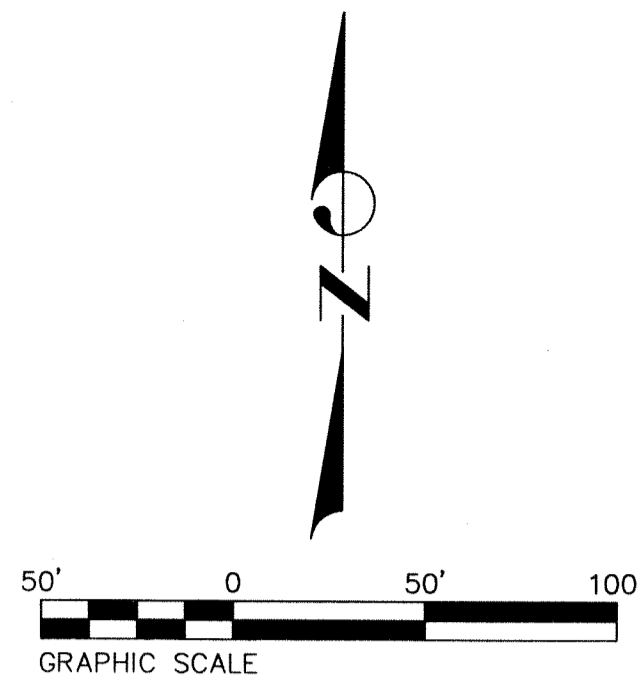


CONCEPT PLAN

PART OF THE NORTHEAST QUARTER OF THE NORTHEAST QUARTER OF SECTION 25,
TOWNSHIP 1 NORTH, RANGE 8 WEST OF THE THIRD PRINCIPAL MERIDIAN,
CITY OF BELLEVILLE, ST. CLAIR COUNTY, ILLINOIS

PARKING SPACES (9'X19')
PARKING SPACES REQUIRED = 288
PARKING SPACES PROVIDED = 301

BUILDINGS
16 UNITS PER BUILDING X 9 BUILDINGS = 144 UNITS
4 BAYS PER GARAGE



THOUVENOT,
WADE &
MOERCHEN, INC.
ENGINEERS ♦ SURVEYORS ♦ PLANNERS



CORPORATE OFFICE
4940 OLD COLLINSVILLE RD.
SWANSEA, ILLINOIS 62226
TEL (618) 624-4488
FAX (618) 624-6888
corp@twm-inc.com

WATERLOO OFFICE
113 SOUTH MAIN STREET
WATERLOO, ILLINOIS 62298
TEL (618) 939-5050
FAX (618) 939-3938
waterloo@twm-inc.com

EDWARDSVILLE OFFICE
1015B CENTURY DRIVE
EDWARDSVILLE, ILLINOIS 62025
TEL (618) 656-4040
FAX (618) 656-4343
edwardsville@twm-inc.com

ST. CHARLES OFFICE
400 N. 5TH STREET, SUITE 101
ST. CHARLES, MISSOURI 63301
TEL (636) 724-8300
FAX (636) 724-8304
stlouis@twm-inc.com

PROFESSIONAL REGISTRATIONS	LICENSE NO.
ILLINOIS PROFESSIONAL DESIGN FIRM	184-001220
PROFESSIONAL ENGINEERING CORP.	62-035370
PROFESSIONAL STRUCTURAL ENGR. CORP.	81-0005029
ILLINOIS PROF. LAND SURVEYING CORP.	048-000029
MISSOURI PROFESSIONAL ENGR. CORP.	NC 001528
MISSOURI LAND SURVEYING CORP.	NC 000346

SEAL

Signature: _____
Signature Date: _____
Expiration Date: _____

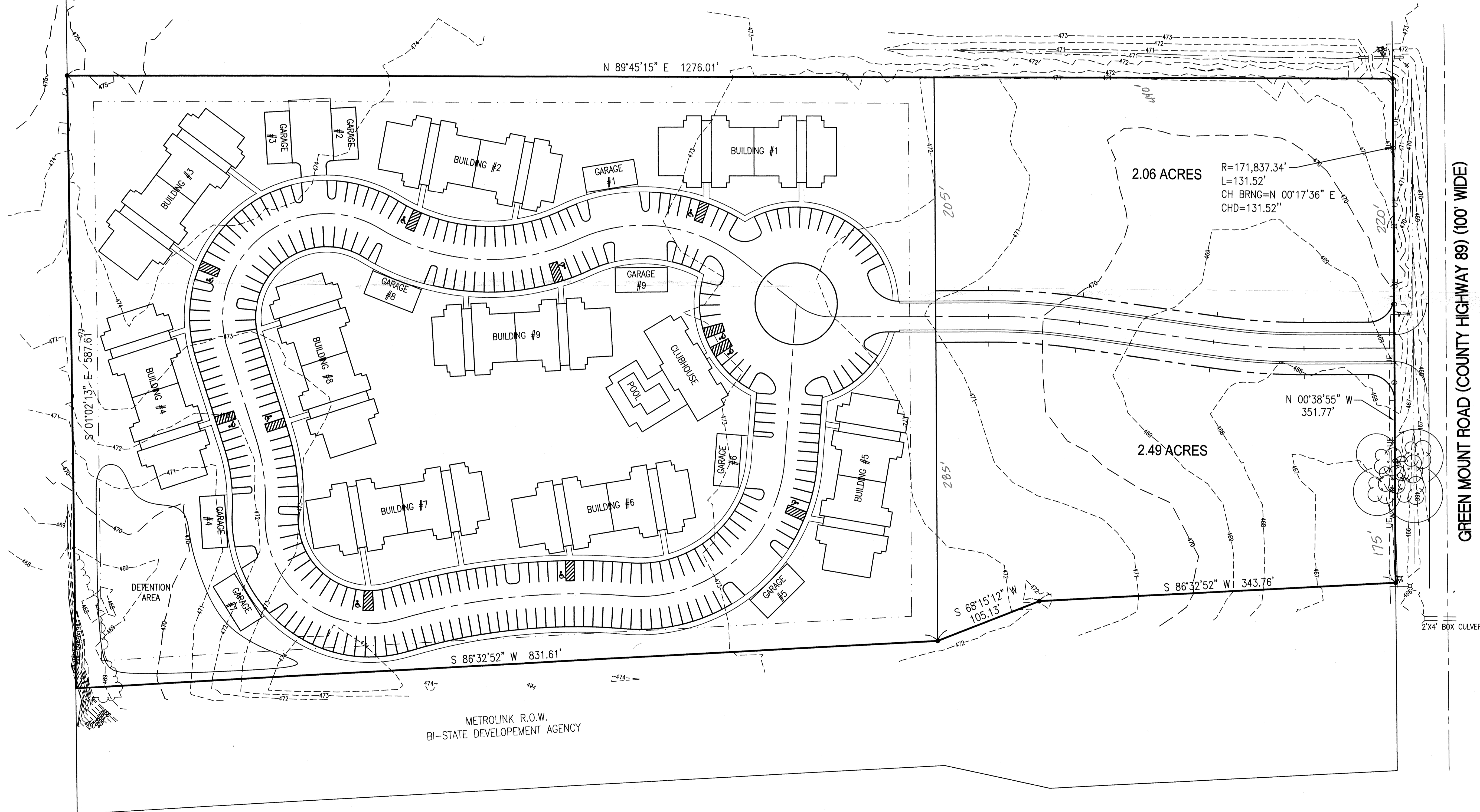
STATEMENT OF RESPONSIBILITY
I hereby confirm that the document herein to be authenticated by my seal is restricted to this sheet, and I hereby disclaim any responsibility for all other drawings, specifications, estimates, reports or other documents or instruments relating to or intended to be utilized for any other part of the architectural, engineering or survey project.

TITLE: **CONCEPT PLAN**

PROJECT: **CITY OF BELLEVILLE
ST. CLAIR COUNTY
ILLINOIS**

REV.	DATE	DESCRIPTION

DRAWN BY: LEM	SHEET
DESIGNED BY: LEM	1
CHECKED BY:	OF <u>1</u> SHEETS
APPROVED BY:	PROJECT DESCRIPTION CONCEPT PLAN
PROJECT NUMBER: D01090028	
<input checked="" type="checkbox"/> ISSUED FOR REVIEW	<input type="checkbox"/> ISSUED FOR BIDDING
<input type="checkbox"/> ISSUED FOR CONSTR.	<input type="checkbox"/> RECORD DRAWING



P:\090028\dwg\090028-CNCP-01.dwg 1/23/2009 11:04:58 AM CST