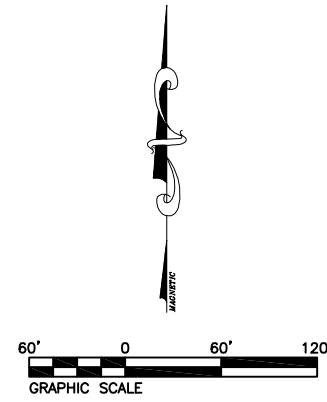
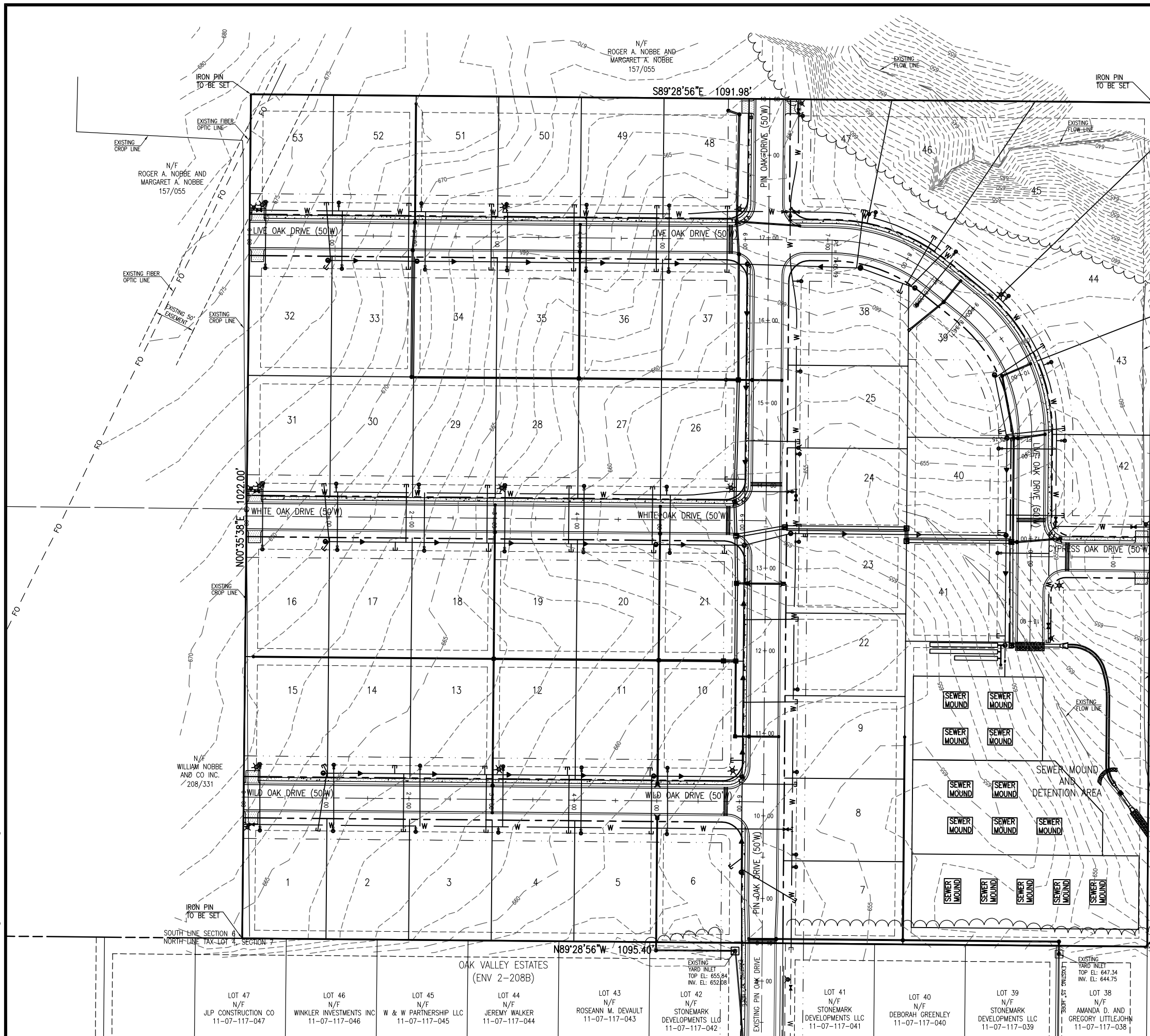


G:\SDSK\PRJ\060065.dwg\060065-TOPD-01.dwg 8/1/2007 9:54:16 AM CDT



**THOUVENOT, WADE & MOERCHEN, INC.**  
ENGINEERS • SURVEYORS • PLANNERS



- CORPORATE OFFICE  
4940 OLD COLLINSVILLE RD.  
SWANSEA, ILLINOIS 62226  
TEL (618) 624-4488  
FAX (618) 624-6688  
corp@twm-inc.com
- WATERLOO OFFICE  
113 SOUTH MAIN STREET  
WATERLOO, ILLINOIS 62298  
TEL (618) 939-5050  
FAX (618) 939-3938  
waterloo@twm-inc.com
- ST. LOUIS OFFICE  
1001 CRAIG ROAD, SUITE 260  
ST. LOUIS, MISSOURI 63146  
TEL (314) 236-5052  
FAX (314) 872-2194  
stlouis@twm-inc.com

PROFESSIONAL REGISTRATIONS	LICENSE NO.
ILLINOIS PROFESSIONAL DESIGN FIRM	184-001220
PROFESSIONAL ENGINEERING CORP.	62-035370
PROFESSIONAL STRUCTURAL ENGR. CORP.	81-005202
ILLINOIS PROF. LAND SURVEYING CORP.	048-000029
MISSOURI PROFESSIONAL ENGR. CORP.	NC 001528
MISSOURI LAND SURVEYING CORP.	NC 000346

SEAL

Signature: \_\_\_\_\_  
Signature Date: \_\_\_\_\_  
Expiration Date: \_\_\_\_\_

**STATEMENT OF RESPONSIBILITY**  
I hereby confirm that the document herein to be authenticated by my seal is restricted to this sheet, and I hereby disclaim any responsibility for all other drawings, specifications, estimates, reports or other documents or instruments relating to or intended to be utilized for any other part of the architectural, engineering or survey project.

**EXISTING TOPOGRAPHY AND SITE PLAN**

**OAK VALLEY ESTATES  
FIRST ADDITION  
CITY OF WATERLOO  
MONROE COUNTY, ILLINOIS**

- SITE BENCHMARK ELEV: 652.64  
"X" IN CONCRETE AT INTERSECTION OF PIN OAK DRIVE AND RED OAK DRIVE IN OAK VALLEY ESTATES.
- SITE BENCHMARK ELEV: 668.66  
CHISELED "□" ON TOP, SW CORNER OF HEADWALL EAST SIDE IL ROUTE 3, 37'± SE OF CENTERLINE OF FIELD ENTRANCE, I.D.O.T. STA: 164+50.5-34.8' RT ±
- PROJECT BENCHMARK ELEV: 651.99  
BENCHMARK SUPPLIED BY I.D.O.T., BENCHMARK #38  
RR SPIKE IN P.P. AT SE CORNER OF INTERSECTION OF IL ROUTE 3 WITH KASKASKIA ROAD-2.8 MILES FROM THE CITY LIMITS OF WATERLOO.  
I.D.O.T. STA: 187+47-62' RT

TITLE:	PROJECT:	
CREATED ON: 8/23/2007		
REV.	DATE	DESCRIPTION
△	10/16/07	REVISIONS PER JOINT PLAT MEETING ON 9/26/07
△		
△		

DRAWN BY: ALH	SHEET
DESIGNED BY:	<b>3</b>
CHECKED BY:	
APPROVED BY:	
PROJECT NUMBER: D33060065	
ISSUED FOR REVIEW	OF 23 SHEETS
RECORD DRAWING	