



- CORPORATE OFFICE  
4940 OLD COLLINSVILLE RD.  
SWANSEA, ILLINOIS 62226  
TEL (618) 624-4488  
FAX (618) 624-6688  
corp@twm-inc.com
- WATERLOO OFFICE  
113 SOUTH MAIN STREET  
WATERLOO, ILLINOIS 62298  
TEL (618) 939-5050  
FAX (618) 939-3938  
waterloo@twm-inc.com
- ST. LOUIS OFFICE  
1001 CRAIG ROAD, SUITE 260  
ST. LOUIS, MISSOURI 63146  
TEL (314) 236-5052  
FAX (314) 872-2194  
stlouis@twm-inc.com

PROFESSIONAL REGISTRATIONS	LICENSE NO.
ILLINOIS PROFESSIONAL DESIGN FIRM	184-001220
PROFESSIONAL ENGINEERING CORP.	62-035370
PROFESSIONAL STRUCTURAL ENGR. CORP.	81-005202
ILLINOIS PROF. LAND SURVEYING CORP.	048-000029
MISSOURI PROFESSIONAL ENGR. CORP.	NC 001528
MISSOURI LAND SURVEYING CORP.	NC 000346

Signature: \_\_\_\_\_  
Signature Date: \_\_\_\_\_  
Expiration Date: \_\_\_\_\_

**STATEMENT OF RESPONSIBILITY**  
I hereby confirm that the document herein to be authenticated by my seal is restricted to this sheet, and I hereby disclaim any responsibility for all other drawings, specifications, estimates, reports or other documents or instruments relating to or intended to be utilized for any other part of the architectural, engineering or survey project.

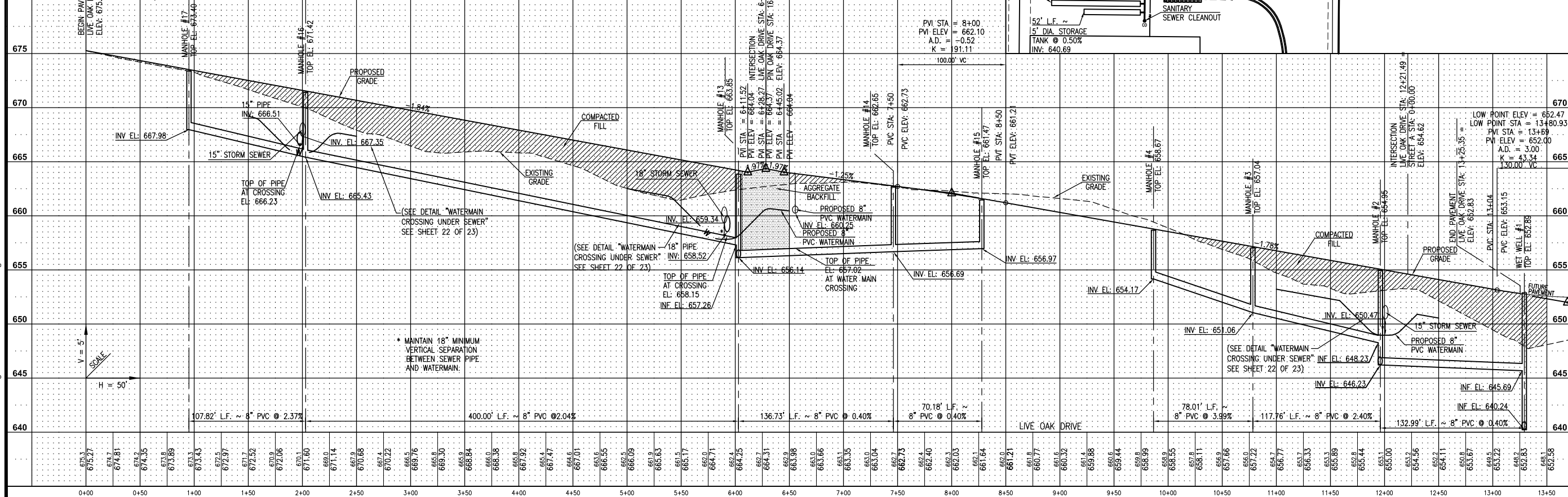
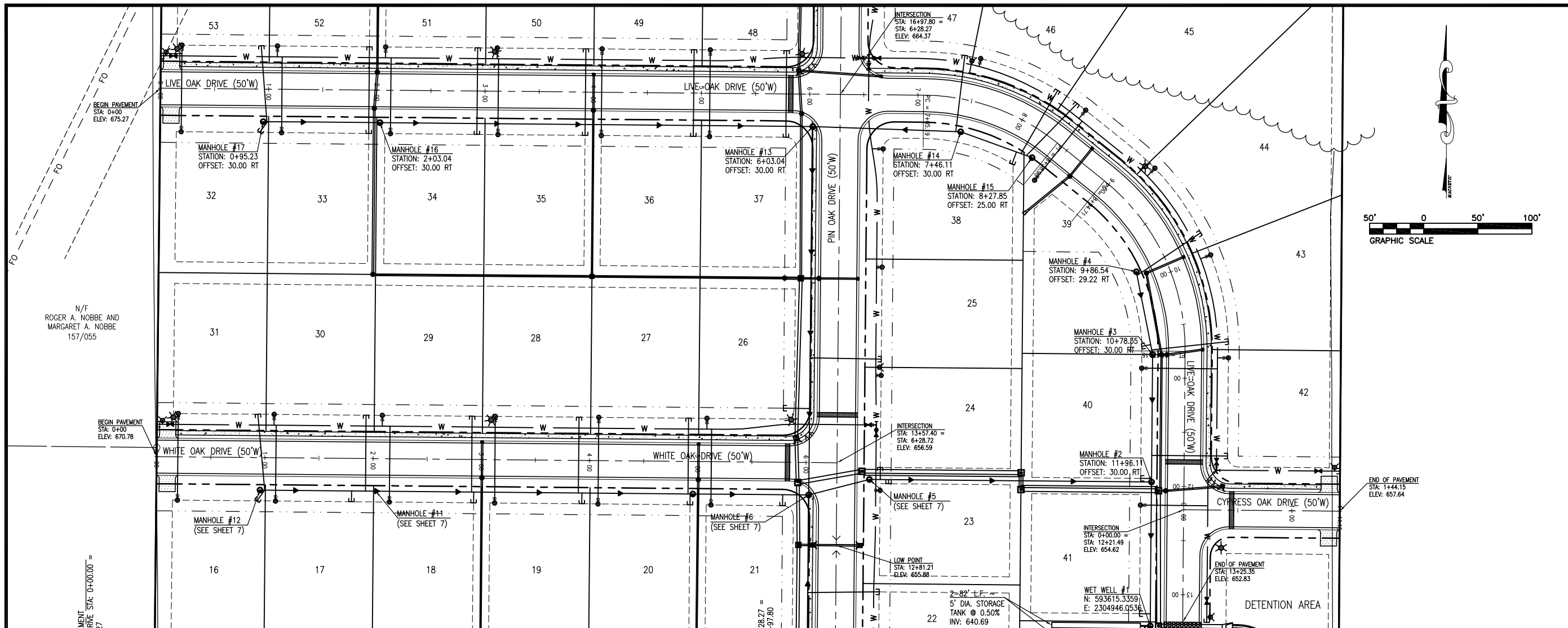
**LIVE OAK DRIVE AND SANITARY SEWER PLAN AND PROFILE**  
OAK VALLEY ESTATES  
FIRST ADDITION  
CITY OF WATERLOO  
MONROE COUNTY, ILLINOIS

TITLE: \_\_\_\_\_  
PROJECT: \_\_\_\_\_

REV.	DATE	DESCRIPTION
1	8/23/2007	CREATED ON
2	10/16/07	REVISIONS PER JOINT PLAT MEETING ON 9/26/07

DRAWN BY: _____	ALH	SHEET
DESIGNED BY: _____		
CHECKED BY: _____		
APPROVED BY: _____		
PROJECT NUMBER: D33060065	OF 23 SHEETS	

ISSUED FOR REVIEW  RECORD DRAWING



G:\S\DK\PRJ\060065.dwg 8/1/2007 1:32:55 PM CDT