

**SUBDIVISION IMPROVEMENTS  
CONSTRUCTION GUIDELINES  
CONCRETE AND ASPHALT PAVEMENTS**

MAY, 2002

- Developer's engineer/surveyor shall stake road right of way or temporary easement, whichever is past construction limits, on 100 ft. intervals in tangents and 50 ft. intervals in curves and at all p.c.s., p.t.s., v.c. high and v.c. low points. Each stake will be marked with station, a final grade reference line, and the hub elevation.
- Prior to commencement of any work the Developer, Contractor and County shall have an on site pre-construction meeting.
- All preliminary erosion control and detention facilities provided for in plan shall be installed.
- It is usually advisable to remove all trees within the work area prior to staking.
- The County must be advised when dirt work commences. Compaction test will be performed by the County for every 18" of fill and at final grade line. Culverts and storm sewer should be placed as part of dirt work.
- All storm sewer outlets should be reinforced to prevent soil erosion.
- Dirt work should be completed to within 3 in. of final grade.
- All utility crossings requiring excavation must be completed before proceeding to next stage.
- The Contractor shall core out the road area to finished dirt grade. A stringline will be used to establish depth within 1/2 in. tolerance.
- The County will inspect core area checking depth and compaction.
- After approval of the lime modified subgrade (for asphalt pavement) the 5" of CA 04 sub base shall be placed.
- Inlet structures to be completed and curb and gutter can be placed at this time.
- Dirt grade or CA 04 sub base will be checked against curb and gutter to insure proper pavement depth and crown.
- Placement of concrete pavement or aggregate base and asphalt pavement.
- Complete final dirt work behind curb including required ditches, etc.
- All final grading must be approved by the County before seeding.
- Staking:

Will be done by the Developer's Engineer/Surveyor.

**18. Documentation:**

Copies of all material tickets must be provided to County on a 30 day basis. This includes concrete, pipe, inlets, aggregate, stabilization lime, reinforcing bars, seed, fertilizer, etc.

It is the Developers responsibility that all materials meet the required specifications. Sub-standard materials will be removed and replaced by the Developer at the Developer's expense before acceptance.

**19. Required Inspections/Tests:**

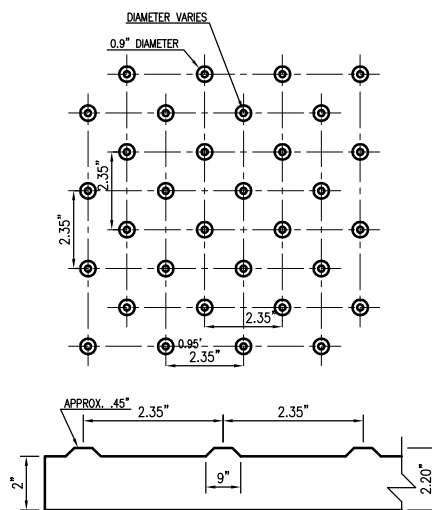
It is the Developers responsibility to insure that the County is advised in adequate time to perform the following tests. Failure to have tests made shall constitute failure of work item.

- Dirt - Compaction every 18" of fill and grades.
- Compaction around culverts and storm sewers.
- Dirt - Compaction and grade after stabilization.
- Concrete - Minimum of one set of tests per 100 cubic yards or daily if less than 100 cubic yards.
- Grading - Width, slope and ditch grades.
- Asphalt compaction every 500 tons, or daily if less than 500 tons.
- Aggregate grade & compaction for both sub base and base.

TYPICAL STREET SECTION ATTACHED

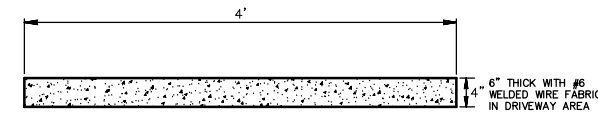
**CONCRETE STREET PAVEMENT  
GENERAL CONSTRUCTION SPECIFICATIONS  
NOVEMBER 1, 2002**

- All work shall be in accordance with IDOT Standard Specification.
- For work outside the limits of bridge approach pavement, all references to epoxy coating in the Highway Standards and Standard Specifications for reinforcement, tie bars and chair supports will not apply for pavement, shoulders, curb, gutter, combination curb and gutter and median.
- Curb Bars**
  - Monolithic curb/pavement - Bar Required
  - Separate Curb - Bar - #6 at 24" Ctrs./24" long Drilled or preformed bars shall be epoxy anchored
- Longitudinal Sawed Joints**  
Bars #6 - 24" Ctr./24" long
- Longitudinal Construction Joint**  
#6 bar - 24" space/24" long  
Drilled or preformed bars shall be epoxy anchored
- Transverse Contraction Joint**  
Sawed 15 ft. maximum space
- Transverse Expansion Joint**  
1 1/4" epoxy coated dowel bars with 1" minimum preformed joint filler. Spacing approximately 600 ft. and at cul-de-sac and intersections. Joints to lane match and extend through curb.
- Transverse Construction Joints**  
#6 bars minimum 24" long/24" space
- Bending of bars is not allowed.
- Finish shall be Type B.
- Cul-de-sac joint spacing with open center can be a modified fully paved pattern.
- All concrete pavement joints shall be filled with hot poured joint sealant per Article 1050.02 of the Standard Specs. or approved equal.

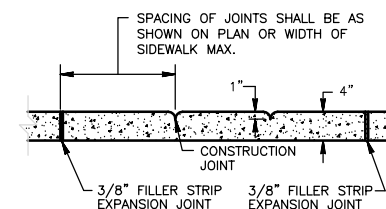


**DETECTABLE WARNING PAVER**

- NOTE:
- USE SYMONS COLOR HARDNER IN BRICK RED OR APPROVED EQUAL FOR VISUAL CONTRAST ON RAMP
  - DETECTABLE WARNINGS SHALL BE PLACED ANY WHERE THAT PEDESTRIAN TRAFFIC ENTERS A VEHICULAR TRAFFIC AREA.

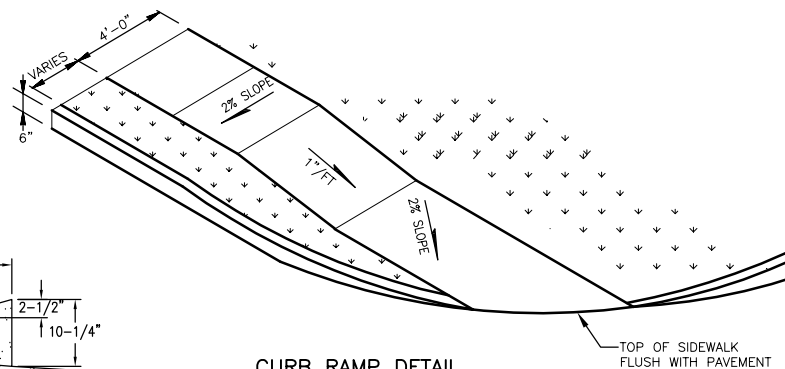


**SIDEWALK DETAIL**



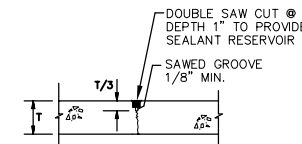
NOTE: MAXIMUM 25" SPACING BETWEEN EXPANSION JOINTS PROVIDE EXPANSION JOINT MATERIAL AND SEALANT WHERE SIDEWALK AND BUILDING INTERFACE.

**SIDEWALK JOINT DETAIL**

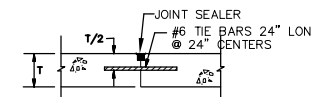


**CURB RAMP DETAIL**

NOT TO SCALE

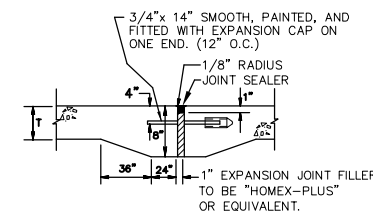


**SAWED TRANSVERSE CONTRACTION JOINT**

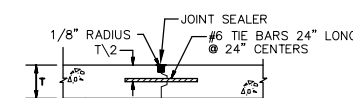


**TRANSVERSE CONSTRUCTION JOINT**

(USE WHEN NOT AT JOINT LOCATION)

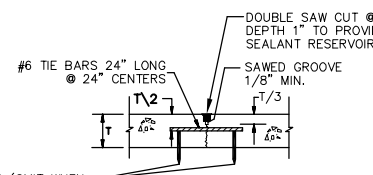


**EXPANSION JOINT**



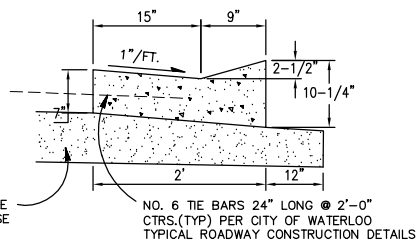
**LONGITUDINAL CONSTRUCTION JOINT**

(USE WHEN NOT AT JOINT LOCATION)

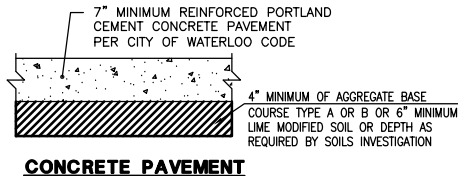


**SAWED LONGITUDINAL JOINT**

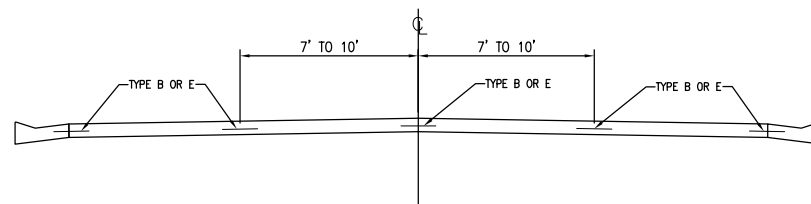
SUPPORT PINS (OMIT WHEN TIE BARS ARE PLACED BY APPROVED MECHANICAL MEANS).



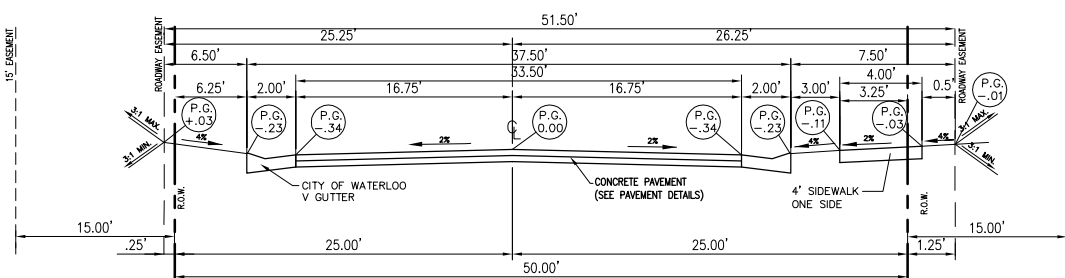
**CITY OF WATERLOO  
V GUTTER DETAIL**



**CONCRETE PAVEMENT**

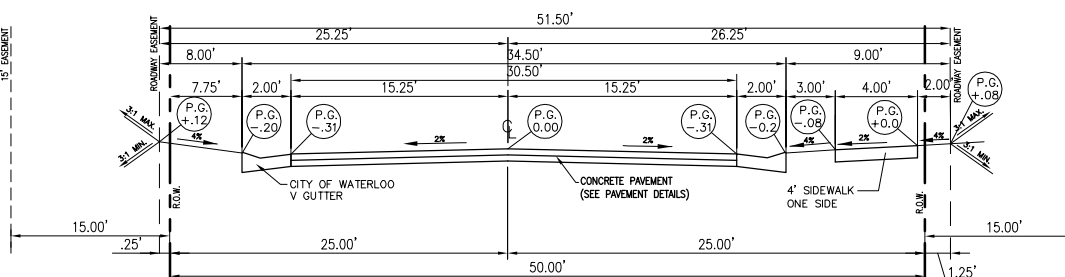


**TYPICAL STREET SECTION  
REBAR PLACEMENT**



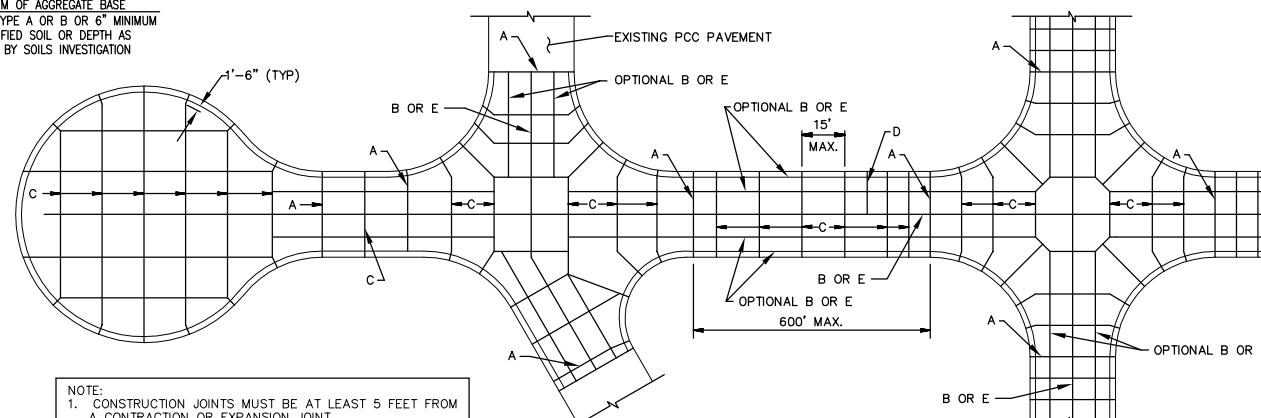
**TYPICAL STREET SECTION**

PIN OAK DRIVE



**TYPICAL STREET SECTION**

COUNTY-LAND ACCESS STREET  
CITY-SECONDARY STREET



**P.C.C. PAVEMENT JOINT LOCATION**

- NOTE:
- CONSTRUCTION JOINTS MUST BE AT LEAST 5 FEET FROM A CONTRACTION OR EXPANSION JOINT.
  - SEALANT RESERVOIR SHALL BE OF ADEQUATE SIZE TO ASSURE SUFFICIENT SEAL.

**THOUVENOT,  
WADE &  
MOERCHEN, INC.**  
ENGINEERS • SURVEYORS • PLANNERS



- CORPORATE OFFICE  
4940 OLD COLLINSVILLE RD.  
SWANSEA, ILLINOIS 62226  
TEL (618) 624-4488  
FAX (618) 624-6688  
corp@twm-inc.com
- WATERLOO OFFICE  
113 SOUTH MAIN STREET  
WATERLOO, ILLINOIS 62298  
TEL (618) 939-5050  
FAX (618) 939-3938  
waterloo@twm-inc.com
- ST. LOUIS OFFICE  
1001 CRAIG ROAD, SUITE 260  
ST. LOUIS, MISSOURI 63146  
TEL (314) 236-5052  
FAX (314) 872-2194  
stlouis@twm-inc.com

PROFESSIONAL REGISTRATIONS	LICENSE NO.
ILLINOIS PROFESSIONAL DESIGN FIRM	184-001220
PROFESSIONAL ENGINEERING CORP.	62-035370
PROFESSIONAL STRUCTURAL ENGR. CORP.	81-005202
ILLINOIS PROF. LAND SURVEYING CORP.	048-000029
MISSOURI PROFESSIONAL ENGR. CORP.	NC 001528
MISSOURI LAND SURVEYING CORP.	NC 000346

SEAL

Signature: \_\_\_\_\_  
Signature Date: \_\_\_\_\_  
Expiration Date: \_\_\_\_\_

**STATEMENT OF RESPONSIBILITY**

I hereby confirm that the document herein to be authenticated by my seal is restricted to this sheet, and I hereby disclaim any responsibility for all other drawings, specifications, estimates, reports or other documents or instruments relating to or intended to be utilized for any other part of the architectural, engineering or survey project.

**PAVEMENT DETAILS  
AND  
JOINT DETAILS**

**OAK VALLEY ESTATES  
FIRST ADDITION  
CITY OF WATERLOO  
MONROE COUNTY, ILLINOIS**

REV.	DATE	DESCRIPTION
CREATED ON:	8/23/2007	
1	10/16/07	REVISIONS PER JOINT PLAT MEETING ON 9/26/07
2	11/13/07	REVISIONS PER COMMENTS FROM LETTER 10/26/07

DRAWN BY:	ALH	SHEET
DESIGNED BY:		
CHECKED BY:		
APPROVED BY:		
PROJECT NUMBER	D33060065	OF 23 SHEETS
<input type="checkbox"/> ISSUED FOR REVIEW	<input type="checkbox"/> RECORD DRAWING	

**20**

G:\S\DKP\DLJ\060065.dwg 8/23/2007 11:51:36 AM CDT