

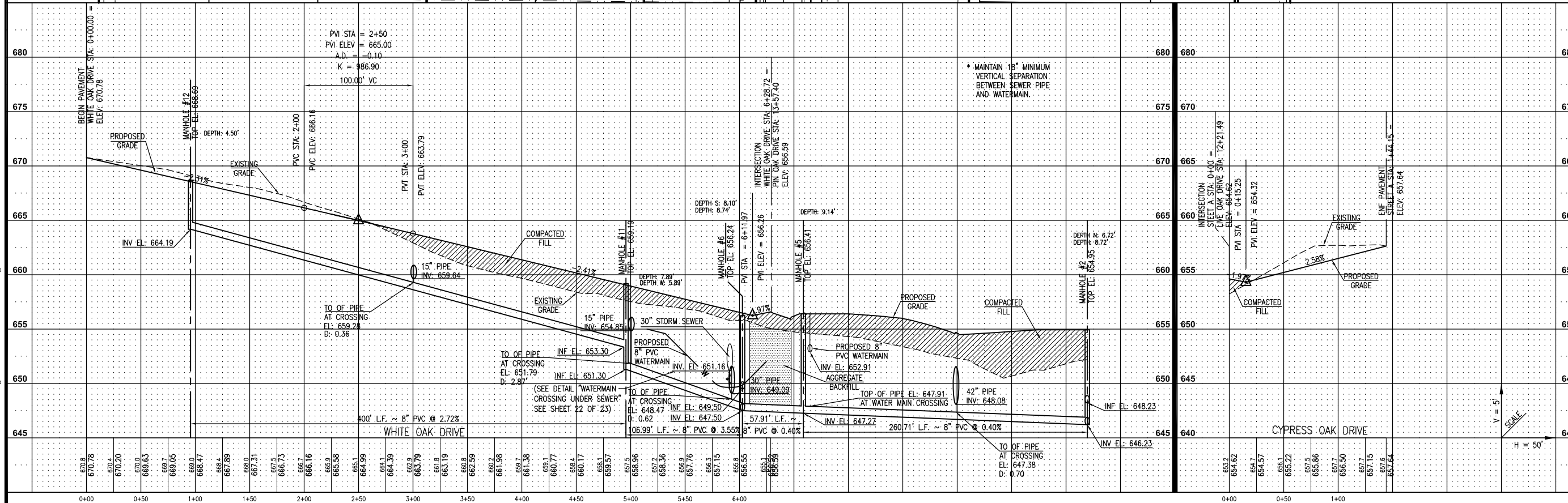
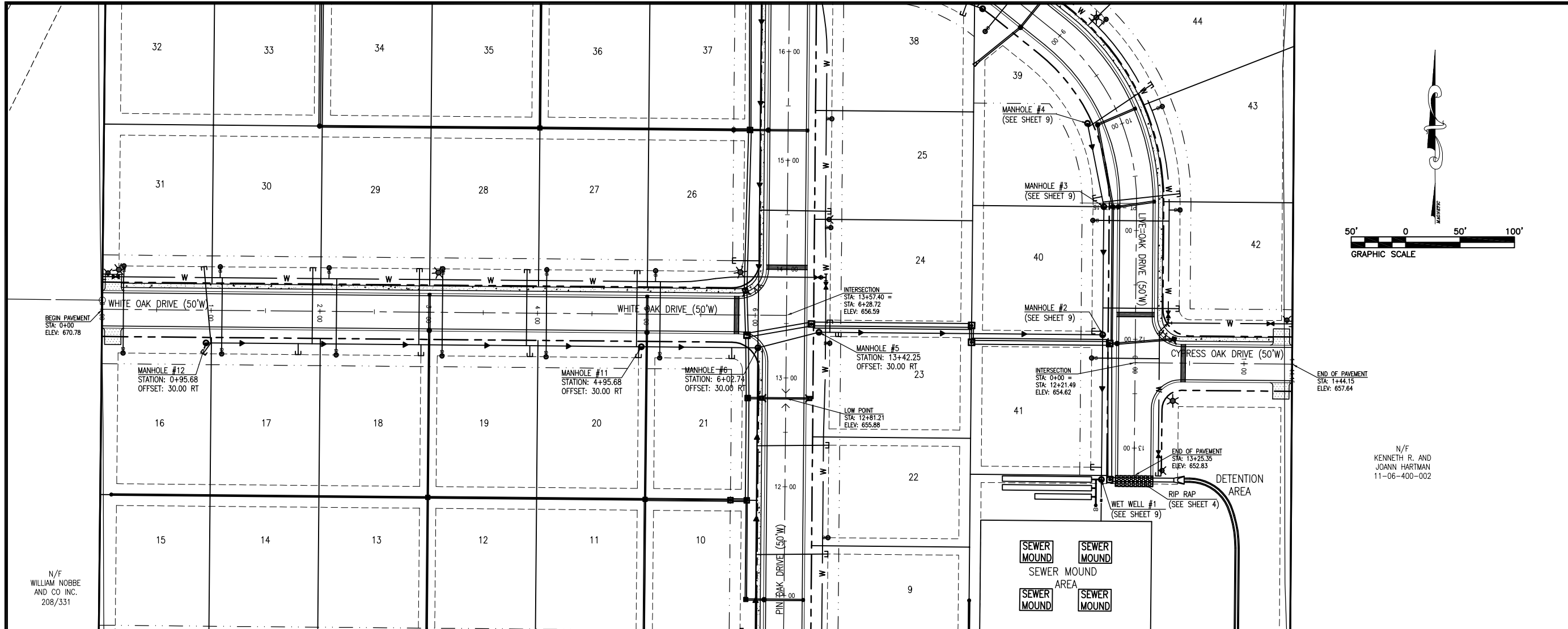
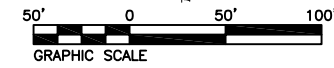


- CORPORATE OFFICE
4940 OLD COLLINSVILLE RD.
SWANSEA, ILLINOIS 62226
TEL (618) 624-4488
FAX (618) 624-6688
corp@twm-inc.com
- WATERLOO OFFICE
113 SOUTH MAIN STREET
WATERLOO, ILLINOIS 62298
TEL (618) 939-5050
FAX (618) 939-3938
waterloo@twm-inc.com
- ST. LOUIS OFFICE
1001 CRAIG ROAD, SUITE 260
ST. LOUIS, MISSOURI 63146
TEL (314) 236-5052
FAX (314) 872-2194
stlouis@twm-inc.com

PROFESSIONAL REGISTRATIONS	LICENSE NO.
ILLINOIS PROFESSIONAL DESIGN FIRM	184-001220
PROFESSIONAL ENGINEERING CORP.	62-035370
PROFESSIONAL STRUCTURAL ENGR. CORP.	81-005202
ILLINOIS PROF. LAND SURVEYING CORP.	048-000029
MISSOURI PROFESSIONAL ENGR. CORP.	NC 001528
MISSOURI LAND SURVEYING CORP.	NC 000346

SEAL
N/F
KENNETH R. AND
JOANN HARTMAN
11-06-400-002

Signature: _____
Signature Date: _____
Expiration Date: _____
STATEMENT OF RESPONSIBILITY
I hereby confirm that the document herein to be authenticated by my seal is restricted to this sheet, and I hereby disclaim any responsibility for all other drawings, specifications, estimates, reports or other documents or instruments relating to or intended to be utilized for any other part of the architectural, engineering or survey project.



WHITE OAK DRIVE AND CYPRESS OAK DRIVE SANITARY SEWER PLAN AND PROFILE
OAK VALLEY ESTATES
FIRST ADDITION
CITY OF WATERLOO
MONROE COUNTY, ILLINOIS

CREATED ON:	8/23/2007	
REV.	DATE	DESCRIPTION
1	10/16/07	REVISIONS PER JOINT PLAT MEETING ON 9/26/07

DRAWN BY: ALH
DESIGNED BY:
CHECKED BY:
APPROVED BY:
PROJECT NUMBER: D33060065
SHEET: 8 OF 23 SHEETS
 ISSUED FOR REVIEW RECORD DRAWING

G:\SD\KPR\J\060065.dwg 8/1/2007 1:27:53 PM CDT