

FINAL PLAT FOR STONE BRIDGE ESTATES

PART OF THE EAST HALF OF SECTION 10,
T1S, R9W, OF THE THIRD PRINCIPAL MERIDIAN
VILLAGE OF MILLSTADT
ST. CLAIR COUNTY, ILLINOIS

SCHOOL DISTRICTS:
GRADE SCHOOL: MILLSTADT
HIGH SCHOOL: BELLEVILLE

AREA IN LOTS = 827,876 SQUARE FEET ±
AREA IN R.O.W. = 249,446 SQUARE FEET ±
TOTAL AREA OF SUB. = 1,077,322 SQUARE FEET ±

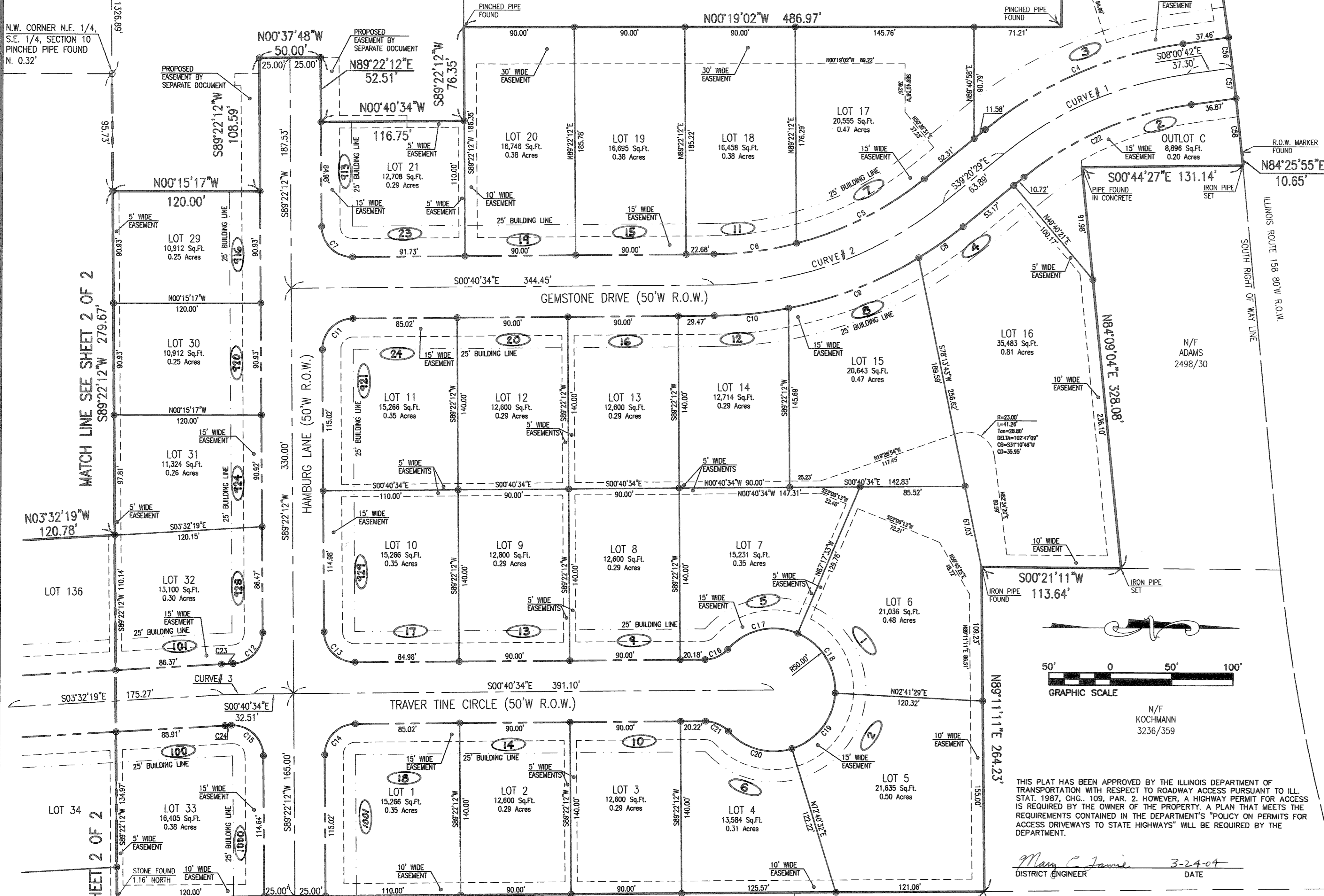
SITE BENCHMARK ELEV: 573.50
FOUND AXLE AT NORTHEAST CORNER OF
LOT 91 OF ALPINE MEADOWS 2ND ADDITION

IT IS NOT WARRANTED THAT THIS PLAT
CONTAINS COMPLETE INFORMATION REGARDING
DEDICATIONS, EASEMENTS, RESERVATIONS,
RIGHTS OF WAY, BUILDING LINES, AND
OTHER ENCUMBRANCES. FOR COMPLETE
INFORMATION, A TITLE OPINION OR
COMMITMENT FOR TITLE INSURANCE SHOULD
BE OBTAINED.

OLD IRON PIPE
2" DEEP N.W. CORNER
S.E. 1/4 SECTION 10

SUBDIVIDER/OWNER
STONEMARK DEVELOPMENTS, L.L.C.
3500 LEBANON AVE.
BELLEVILLE, IL 62221
STEVE R. WILKE, MANAGING MEMBER

ENGINEER AND SURVEYOR
THOUVENOT, WADE, AND MOERCHEN, INC.
REGIONAL OFFICE
118 EAST 3RD. ST.
WATERLOO, IL 62298



| CURVE | LENGTH | RADIUS | DELTA | CHORD BEARING | CHORD DIST. |
|-----------|---------|----------|-----------|---------------|-------------|
| C4 | 177.71' | 325.00' | 31°19'47" | S23°40'35"E | 175.51' |
| C5 | 117.56' | 275.00' | 24°29'38" | N27°05'40"W | 116.67' |
| C6 | 68.02' | 275.00' | 14°10'17" | N07°45'43"W | 67.84' |
| C7 | 39.29' | 25.00' | 90°02'46" | N44°20'49"E | 35.37' |
| C8 | 44.20' | 325.00' | 7°47'35" | N35°26'41"W | 44.17' |
| C9 | 114.22' | 325.00' | 20°08'14" | N21°28'47"W | 113.64' |
| C10 | 60.89' | 325.00' | 10°44'05" | N06°02'37"W | 60.80' |
| C11 | 39.25' | 25.00' | 89°57'14" | S45°39'11"E | 35.34' |
| C12 | 38.46' | 25.00' | 88°08'08" | N46°33'44"W | 34.78' |
| C13 | 39.29' | 25.00' | 90°02'46" | N44°20'49"E | 35.37' |
| C14 | 39.25' | 25.00' | 89°57'14" | S45°39'11"E | 35.34' |
| C15 | 40.26' | 25.00' | 92°16'44" | S43°13'50"W | 36.05' |
| C16 | 21.03' | 25.00' | 48°11'23" | N24°46'16"W | 20.41' |
| C17 | 62.46' | 50.00' | 92°16'44" | S43°13'50"W | 58.48' |
| C18 | 61.07' | 50.00' | 69°59'03" | S57°41'58"W | 57.35' |
| C19 | 61.07' | 50.00' | 69°59'03" | N52°18'59"W | 57.35' |
| C20 | 56.58' | 50.00' | 64°50'17" | N15°05'40"E | 53.61' |
| C21 | 21.03' | 25.00' | 48°11'23" | S23°25'07"W | 20.41' |
| C22 | 150.37' | 275.00' | 31°19'47" | S23°40'35"E | 148.51' |
| C23 | 9.57' | 525.00' | 1°02'38" | S03°00'59"E | 9.57' |
| C24 | 5.22' | 475.00' | 0°37'46" | S03°13'26"E | 5.22' |
| C55 | 144.93' | 2252.00' | 3°41'14" | S80°11'11"W | 144.90' |
| C56 | 25.00' | 2252.00' | 0°38'10" | S82°20'53"W | 25.00' |
| C57 | 25.00' | 2252.00' | 0°38'10" | S82°59'03"W | 25.00' |
| C58 | 44.40' | 2252.00' | 1°07'47" | S83°52'02"W | 44.40' |
| CURVE # 1 | 164.04' | 300.00' | 31°19'47" | S23°40'35"E | 162.01' |
| CURVE # 2 | 202.45' | 300.00' | 38°39'54" | N20°00'31"W | 198.63' |
| CURVE # 3 | 24.98' | 500.00' | 2°51'44" | S02°06'26"E | 24.98' |

Stonemark Developments, L.L.C., an Illinois Limited Liability Corporation, owner of the tract of land shown hereon, has caused said tract to be surveyed and subdivided in the manner shown, and said subdivision is to be hereinafter known as STONE BRIDGE ESTATES. All rights of way and easements shown hereon are hereby dedicated to the use of the public forever, and for drainage. Every lot depicted on this plat shall be subject to restrictive covenants established by separate recorded instrument.

Dated this 1st day of MARCH, 2004.

Steve R. Wilke
Stonemark Developments, L.L.C.
Steve R. Wilke, Managing Member.

State of Illinois }
County of ST. CLAIR } SS

I, Annette R. Gallagher, a Notary Public in and for said county and state, do hereby certify that Steve R. Wilke, as Managing Member of Stonemark Developments, L.L.C., a Limited Liability Corporation, personally known to me to be the same person whose name is subscribed to the foregoing instrument, appeared before me this day in person and acknowledged that he signed and delivered this plat as the free and voluntary act of said Limited Liability Corporation for the uses and purposes set forth therein.

Given under my hand and official seal this 1st day of March, 2004.

Annette R. Gallagher
Notary Public

OFFICIAL SEAL
ANNETTE R. GALLAGHER
NOTARY PUBLIC - STATE OF ILLINOIS
My Commission Expires 8/08/08

I, James E. Paik, a registered Illinois Professional Land Surveyor, do hereby certify that this plat is a correct representation of a survey and subdivision made under my direct supervision at the request of Stonemark Developments, L.L.C. for the purpose of subdividing the tract into lots as shown. We further certify that the parcel included within this plat is located within Zone "X" as delineated by the Federal Emergency Management Agency Community Panel No. 17163003050 dated November 5, 2003. No guarantee is made that the property encompassed by this plat is not subject to flooding.

THOUVENOT, WADE & MOERCHEN, INC.
James E. Paik, PLS 2045
State of Illinois }
County of St. Clair } SS

I, the undersigned, County Clerk of St. Clair County, Illinois, do hereby certify that I have examined the above plat and I have searched the records of my office to ascertain whether all redeemable sales for unpaid taxes or special assessments have been paid as required by law upon all of the property embraced within said plat, and I hereby certify that I find no redeemable tax sales or unpaid forfeited taxes against any of the real estate included in this plat, and I do hereby approve this plat for assessment purposes. I further certify that I have received all statutory fees in connection with the attached plat.

In witness whereof, I have hereunto set my hand and seal of my office on this 24th day of March, 2004.

Bob Delaney
County Clerk of St. Clair County, Illinois

State of Illinois }
County of St. Clair } SS

I, Sheldon A. Hildebrand, Mayor of the Village of Millstadt, do hereby certify that the plat shown hereon was duly presented to the Village Board of Trustees and approved at a meeting held on 12th day of April, 2004.

Sheldon A. Hildebrand
Mayor

State of Illinois }
County of St. Clair } SS

Approved by the Plan Commission this 15 day of JUNE, 2004.

Raymond H. Helt
Chairman

State of Illinois }
County of St. Clair } SS

We, the Superintendents, do hereby certify that the required improvements have been installed or the required guarantee bond has been posted for the completion of all land improvements.

Water Superintendent: [Signature]
Sewer Superintendent: [Signature]
Street Superintendent: [Signature]

Dated this 11th day of Nov. 15th, 2004.

APPROVED AND ACCEPTED THIS 12th DAY OF APRIL, 2004.

[Signature]
ST. CLAIR COUNTY - 911 COORDINATOR

DRAINAGE REPORT

TOPOGRAPHIC STUDIES HAVE BEEN PERFORMED ON THE PROPOSED IMPROVEMENTS AND INDICATED TO THE BEST OF MY KNOWLEDGE AND BELIEF THE DRAINAGE OF SURFACE WATERS WILL NOT BE CHANGED BY THE CONSTRUCTION OF THE SUBDIVISION AS SHOWN ON THIS FINAL SUBDIVISION PLAT AND IF, DURING CONSTRUCTION, ANY SURFACE WATER DRAINAGE SHOULD BE CHANGED, THE DEVELOPER WILL, IN THE FINAL DESIGN, MAKE PROVISIONS FOR COLLECTION AND DIVISION OF SUCH SURFACE WATERS INTO PUBLIC AREAS IN ACCORDANCE WITH GENERALLY ACCEPTED ENGINEERING PRACTICES.

[Signature]
CRAIG D. BRAUER, I.R.P.E. NO. 047294
LICENSE EXPIRES: 11/30/05

THOUVENOT,
WADE &
MOERCHEN, INC.
ENGINEERS ♦ SURVEYORS ♦ PLANNERS



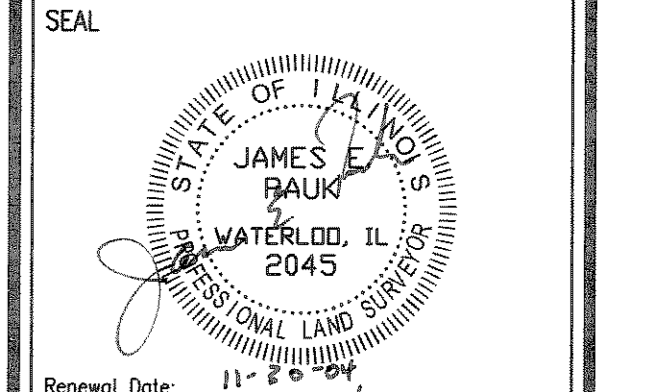
CORPORATE OFFICE
4940 OLD COLLINSVILLE RD.
SWANSEA, ILLINOIS 62226
TEL (618) 624-4488
FAX (618) 624-6688
corp@twm-inc.com

WATERLOO OFFICE
118 EAST THIRD STREET
WATERLOO, ILLINOIS 62298
TEL (618) 939-5050
FAX (618) 939-3938
twm@tc.net

ST. LOUIS OFFICE
1001 CRAIG ROAD, SUITE 260
ST. LOUIS, MISSOURI 63146
TEL (314) 236-5052
FAX (314) 872-2194
stlouis@twm-inc.com

PROFESSIONAL REGISTRATIONS

| ILLINOIS PROFESSIONAL DESIGN FIRM | LICENSE NO. |
|-------------------------------------|-------------|
| PROFESSIONAL ENGINEERING CORP. | 184-001220 |
| PROFESSIONAL STRUCTURAL ENGR. CORP. | 62-035570 |
| ILLINOIS PROF. LAND SURVEYING CORP. | 01-005202 |
| MISSOURI PROFESSIONAL ENGR. CORP. | 048-000029 |
| MISSOURI LAND SURVEYING CORP. | NC 001528 |
| | NC 000346 |



STATEMENT OF RESPONSIBILITY
I hereby confirm that the document herein to be authorized by my seal is restricted to this sheet, and I hereby disclaim any responsibility for all other drawings, specifications, estimates, reports or other documents or instruments relating to or intended to be utilized for any other part of the architectural, engineering or survey project.

FINAL PLAT
STONE BRIDGE ESTATES

PROJECT:
PART OF THE EAST HALF OF SECTION 10
T1S, R9W, OF THE 3rd PRINCIPAL MERIDIAN
VILLAGE OF MILLSTADT
ST. CLAIR COUNTY, ILLINOIS.

| REV | DATE | DESCRIPTION |
|-----|------|-------------|
| | | |
| | | |

DRAWN BY: KAK SHEET
DESIGNED BY:
CHECKED BY:
APPROVED BY:
PROJECT NUMBER: D30020524 OF 2 SHEETS
 ISSUED FOR REVIEW ISSUED FOR BIDDING
 ISSUED FOR CONSTR. RECORD DRAWING